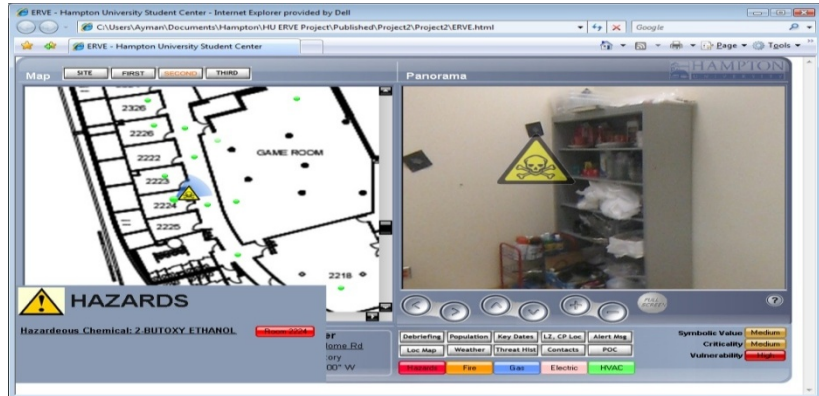


ResponderVIEW™ is an intelligent virtual environment that enables effective capture, sharing and renewal of knowledge about critical facilities and infrastructure.

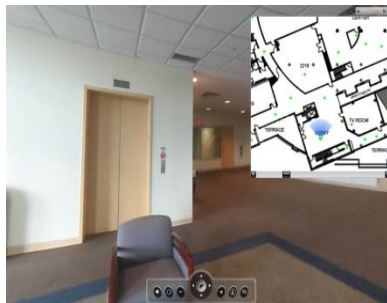
ResponderVIEW™ provides emergency response planners and first-responders with situational awareness as well as training and support. The system guides the emergency responders to critical areas in the facility such as locations of hazardous materials, water and gas shut-off valves, fire suppression equipment, and electrical panels.



Human-like interactive intelligent agents provide debriefing and guidance to the user as well as instructions on how to perform complex tasks.



ResponderVIEW™ can be integrated with live camera or sensor feeds. The system can also be integrated with GIS to allow users to manage all the critical facilities in a geographic area as well as monitor emergency events and assess their impact.



The ResponderVIEW™ solution provides easily renewable on-demand

facility knowledge and can be deployed across PC or portable devices via the Web.



ResponderVIEW™ has the potential to dramatically improve how emergency responders and planners prepare for and respond to emergencies at critical facilities.

## Contact

Ayman Wasfy, PhD  
[awasfy@tssi-inc.com](mailto:awasfy@tssi-inc.com)  
 1700 Rockville Pike, Suite 470, Rockville, MD 20852  
 Tel: 301-998-6164  
[www.tssi-inc.com](http://www.tssi-inc.com)